

Quick Start Guide

AIT450-1a

Amber Insight T450-1a

Advanced OBDII Tracker

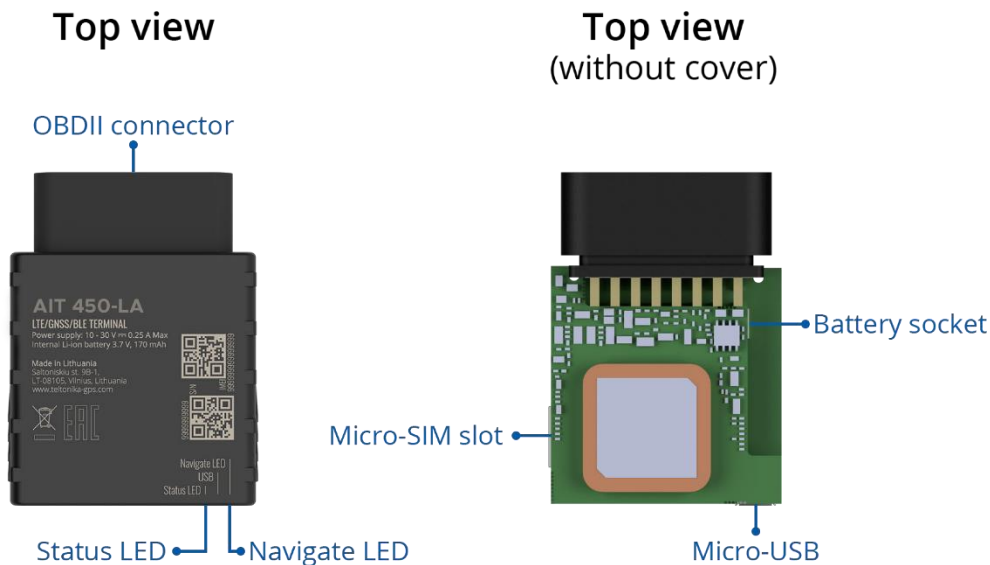
1
Install
Your device

2
Download
Amber Connect
App

3
Activate
the device

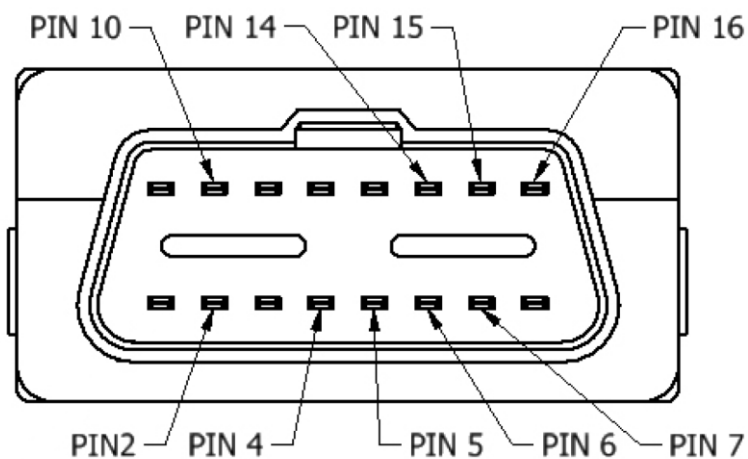


Know your device



AIT 450-LA Device view

Pinout



AIT 450-LA socket pinout

Pin number	Pin name	Description
2	PWM_BUS+/VPW	
4	GND (-)	Ground
5	GND (-)	Ground
6	CAN_H	CAN high
7	K-Line	
10	PWM_BUS-	
14	CAN_L	CAN low
15	L-Line	
16	VCC (12 - 30)V DC(+)	Power supply (+10-30 V DC)

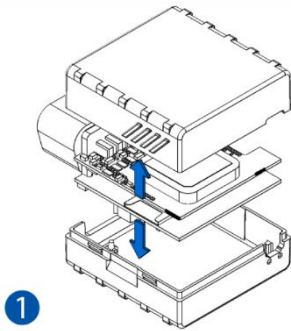
AIT 450-LA socket pinout

Set up your device

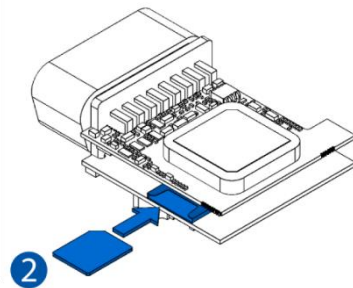
How to insert Micro-SIM card and connect the battery

1. Gently remove AIT 450-LA cover using plastic pry tool from both sides.
2. Insert Micro-SIM card as shown with PIN request disabled or read our Wiki how to enter it later in Amber Configurator. Make sure that Micro-SIM card cut-off corner is pointing forward to slot.
3. Connect battery as shown to device. Position the battery in place where it does not obstruct other components.'
4. Attach device cover back.

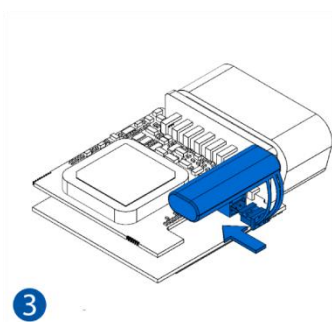
Device is ready to be connected.



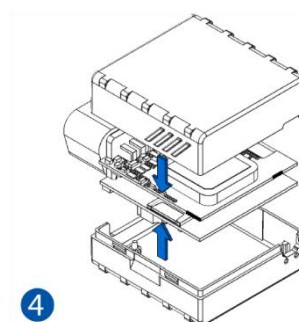
Cover removal



Micro-SIM card insert



Battery connection

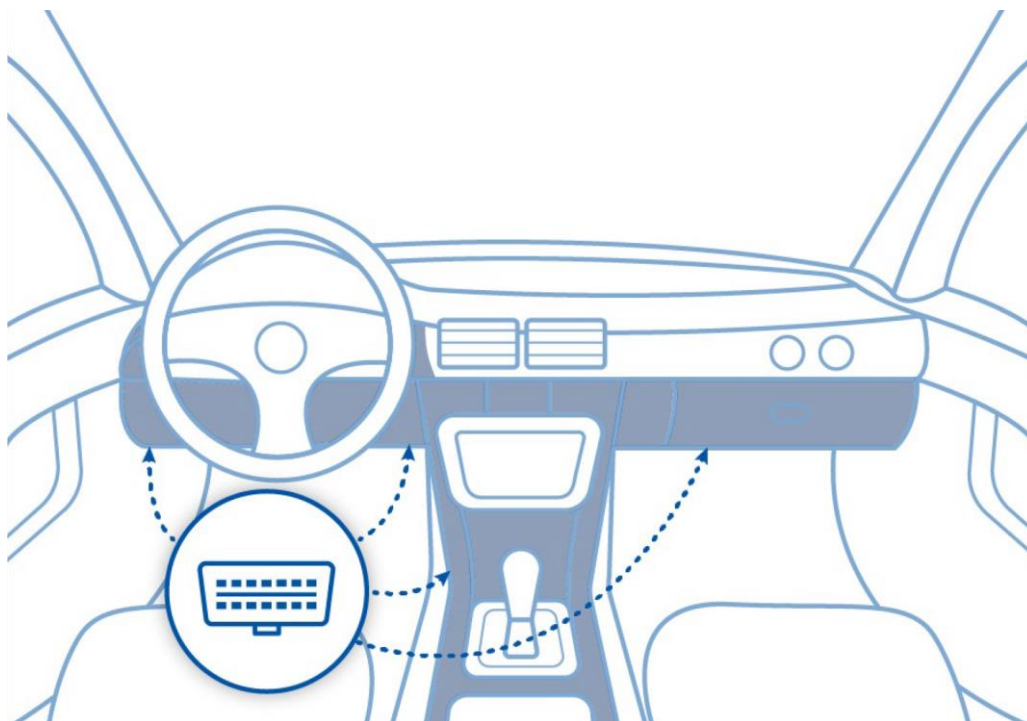


Attaching cover back

Mounting recommendations

Connecting the device to the vehicle:

- Find OBDII connector in your vehicle (Most common OBDII connector locations.).
- Before connecting the device to the OBDII socket, make sure that $\geq 3A$ fuse is present on OBD connector power supply.



Most common AIT 450-LA connector locations.

LED indications

Navigation LED indications

Behaviour	Meaning
Permanently switched on	GNSS signal is not received
Blinking every second	Normal mode, GNSS is working
Off	GNSS is turned off because: Device is not working or Device is in sleep mode
Blinking fast constantly	Device firmware is being flashed

Status LED indications

Behaviour	Meaning
Blinking every second	Normal mode
Blinking every two seconds	Sleep mode
Blinking fast for a short time	Modem activity
Off	Device is not working or Device is in boot mode

Characteristics

Basic characteristics

Module	
Name	AIT 450-LA
Technology	LTE(CAT1)/3G(UMTS/HSPA)/2G(GSM/GPRS)/GNSS/BLUETOOTH

GNSS	
GNSS	GPS, GLONASS, GALILEO, BEIDOU, SBAS, QZSS, DGPS, AGPS
Receiver	33 channel
Tracking sensitivity	-165 dBm
Accuracy	< 3 m
Hot start	< 1 s
Warm start	< 25 s
Cold start	< 35 s

Cellular	
Technology	LTE CAT1, UMTS/HSPA+ and GSM/GPRS/EDGE
2G bands	EG91-EX: GSM: B3/B8
3G bands	EG91-EX: WCDMA: B1/B8
4G bands	EG91-EX: LTE FDD: B1/B3/B7/B8/B20/B28
Data transfer	LTE: LTE FDD: Max 10Mbps (DL)/Max 5Mbps (UL) UMTS: WCDMA: Max 384Kbps (DL)/Max 384Kbps (UL) GSM: GPRS: Max 107Kbps (DL)/Max 85.6Kbps (UL)
Data support	SMS (text/data)

Power	
Input voltage range	10 - 30 V DC with overvoltage protection
Back-up battery	170 mAh Li-Po battery 3.7 V (0.63 Wh)
Internal fuse	3 A, 125 V
Power consumption	GPRS: max 50 mA rms Nominal with no load: average 35 mA rms GPS sleep: average 12 mA Deep Sleep: average 4.5 mA

Bluetooth	
Specification	4.0 + LE
Supported peripherals	Temperature and Humidity sensor, Inateck Barcode Scanner, Universal BLE sensors support

OBD INTERFACE	
Data	K-Line, CAN Bus data
Data reading	Up to 32 vehicle onboard parameters, 9 supported OBD protocols

Interface	
Connection	OBDII socket
GNSS antenna	Internal High Gain
GSM antenna	Internal High Gain
USB	2.0 Micro-USB
LED indication	2 status LED lights
SIM	Micro-SIM
Memory	128MB internal flash memory

Physical specification	
Dimensions	67,2 x 49,6 x 25 mm (L x W x H)
Weight	63 g
Operating environment	
Operating temperature (without battery)	-40 °C to +85 °C
Storage temperature (without battery)	-40 °C to +85 °C
Operating humidity	5% to 95% non-condensing
Ingress Protection Rating	IP41
Battery charge temperature	0 °C to +45 °C
Battery discharge temperature	-20 °C to +60 °C
Battery storage temperature	-20 °C to +45 °C for 1 month -20 °C to +35 °C for 6 months
Features	
Sensors	Accelerometer
Scenarios	Green Driving, Over Speeding detection, Jamming detection, GNSS Fuel Counter, Excessive Idling detection, Unplug detection, Towing detection, Crash detection, Auto Geofence, Manual Geofence, Trip
Sleep modes	GPS Sleep, Online Deep Sleep, Deep Sleep, Ultra Deep Sleep
Configuration and firmware update	FOTA Web, FOTA, Amber Configurator (USB, Bluetooth), FMBT mobile application (Configuration)
SMS	Configuration, Events, Debug
GPRS commands	Configuration, Debug
Time Synchronization	GPS, NITZ, NTP
Fuel monitoring	OBDII
Ignition detection	Accelerometer, External Power Voltage, Engine RPM

Safety information

This message contains information on how to operate AIT 450-LA safely. By following these requirements and recommendations, you will avoid dangerous situations. You must read these instructions carefully and follow them strictly before operating the device!

- The device uses SELV limited power source. The nominal voltage is +12 V DC. The allowed voltage range is +10...+30 V DC.
- To avoid mechanical damage, it is advised to transport the device in an impact-proof package. Before usage, the device should be placed so that its LED indicators are visible. They show the status of device operation.
- Before mounting device make sure that a $\geq 3A$ fuse is present on OBD connector power supply.
- Before unmounting the device from vehicle, ignition MUST be OFF.



Do not disassemble the device. If the device is damaged, the power supply cables are not isolated or the isolation is damaged, DO NOT touch the device before unplugging the power supply.



All wireless data transferring devices produce interference that may affect other devices which are placed nearby.



Please consult representatives of your vehicle model regarding OBDII location on your vehicle. In case you are not sure about proper connection, please consult qualified personnel.



The programming must be performed using a PC with autonomic power supply.



Installation and/or handling during a lightning storm is prohibited.



The device is susceptible to water and humidity.



Amber is not responsible for any harm caused by wrong cables used for connection between PC and AIT 450-LA



WARNING! Do not use AIT 450-LA device if it distracts driver or causes inconvenience due to OBDII placement. Device must not interfere with driver.



Battery should not be disposed of with general household waste. Bring damaged or worn-out batteries to your local recycling center or dispose them to battery recycle bin found in stores.



Certification and Approvals

- AIT 450-LA RoHS



This sign on the package means that it is necessary to read the User's Manual before your start using the device. Full User's Manual version can be found in our [Wiki](#).



This sign on the package means that all used electronic and electric equipment should not be mixed with general household waste.



Warranty

Amber connect guarantees its products to be free of any manufacturing defects for a period of **24 months**. With additional agreement we can agree on a different warranty period, for more detailed information please contact our sales manager.

All batteries carry a reduced 6 month warranty period.

If a product should fail within this specific warranty time, the product can be:

- Repaired
- Replaced with a new product
- Replaced with an equivalent repaired product fulfilling the same functionality
- Amber can also repair products that are out of warranty at an agreed cost.

Warranty Disclaimer

Amber products are intended to be used by persons with training and experience. Any other use renders the limited warranties expressed herein and all implied warranties null and void and same are hereby excluded. also excluded from this limited warranty are any and all incidental or consequential damages including but not limited to, loss of use or revenue, loss of time, inconvenience or any other economic loss.



Need help? Contact 24/7 live support!



In App Chat



support@amberconnect.com



Chat via website www.amberconnect.com

Works with Android phones and tablets, iPhone, iPad.
Compatible with Chrome, Mac and PC web browsers.



Scan this QR code to download your App



Amber Connect

© 2024 Amber Connect Limited. All rights reserved