

# Amber Vision C420

## Dual AI 4G Telematics HD Dashcam



### Video Surveillance

Powerful LTE connectivity enables the live monitoring of the vehicle's interior and exterior via the Amber Connect platform; while critical event videos are uploaded to the Amber Cloud for playback at any time.



### Driver Assistance (ADAS)

The ADAS algorithm enables the device to monitor incidents related to following distance, near collisions lane keeping, etc. and warn the driver in real time.



### Panic Button

The discreetly installed in-cab SOS button allows the driver to call dispatch or summon emergency services immediately.



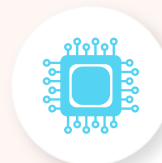
### Dual-Channel Recording

Simultaneously monitor the road ahead and what happens in the driver seat in real-time through the one built-in road-facing camera and one external DMS camera.



### Highly-Integrated Design

The high-definition road-facing camera (main) and the inward-facing camera (sub) are housed in one unit. This saves space and makes it easier to install.



### Fast Integration

Our Amber IoT Hub allows for fast integration into your respective servers for any third-party platform or software integration. This includes intelligent transport systems (ITS).

## Dual AI 4G Telematics HD Dashcam

The Amber Vision C420 (AVC420) 4G dash camera is a cutting-edge solution for fleet management, featuring dual cameras for monitoring both the road ahead and the driver. Equipped with advanced safety features including ADAS and UBI alerts, this device ensures safer driving practices by detecting driver fatigue and distraction. With seamless 4G connectivity, fleet managers can access real-time video streaming, live audio alerts, and route replay, enabling prompt decision-making and analysis. The AVC420 empowers fleet managers across various industries to optimise operations, reduce costs, and enhance overall efficiency through data-driven insights and targeted driver coaching.

## Use Cases



Taxi Service



Online Ride Hailing



Logistics Service



Oil & Gas Trucking

## Module

Name	AVC420
Technology	Dashcam

## Network

Standard	4G LTE
WiFi	2.4GHz support AP Mode/STD Mode/WiFi Direct
Bluetooth	BLE 4.0
Bands	<p>Amber Vision C420-E AVC420-E (Eurasian Version) LTE-FDD: B1/B3/B5/B7/B8/B19/B20 LTE-TDD: B38/B39/B40/B41 (100M) WCDMA: B1/B2/B5/B8 GSM: B2/B3/B5/B8</p> <hr/> <p>Amber Vision C420-LA AVC420-LA (American Version) LTE-FDD: B2/B3/B4/B5/B7/B12/B17 LTE-TDD: B38/B41 (100M) WCDMA: B2/B4/B5 GSM: B2/B5/B8</p>

## Camera

Front camera (Main)	1280×720/15FPS/F2.0/Full Colour /85° (HFoV)
Sub Camera	1280×720/15FPS/F2.5/Full Colour in daytime & monochrome in dim light/90° (HFoV)
Video format	.ts

## Configuration

GNSS	GPS/BDS
Sensor	3-axis
Microphone	Built-In
Speaker	Built-In
Interface	Micro USB*1, SOS*1, TTL*1, Relay*1
Memory Support	MicroSD/TF Card (Up to 256GB)
SIM Card Type	Nano
LED Indication	Red (Power), Blue (Cellular), Green (GNSS)

## Others

Power Supply	Power cable: B+/ACC/GND
Operating Voltage	DC 9-30V
Operating Temperature	-20°C to 65°C
Storage Temperature	-30°C to 85°C
Device Weight	233g
Device Dimension	109*69*52 mm
Certifications	CE/FCC/RoHS



In App Chat

support@amberconnect.com

Chat via website [www.amberconnect.com](http://www.amberconnect.com)

Need help? Contact 24/7 live support!  
Works with Android phones and tablets, iPhone, iPad.  
Compatible with Chrome, Mac and PC web browsers.



Amber Connect

Scan this QR code to download your App

©2024 Amber Connect Limited. All rights reserved